



## Wireless Water Polo Horn User Instructions

The wireless water polo horn is easy to set up and requires no user intervention once set up. The horn can be portable (shown at right) or mounted on a wall (shown on page 2).



It contains a built-in wireless scoreboard adapter:

- Physically connect the horn to your CTS timer (System 6, for example) and use it to transmit scoreboard data wirelessly to wireless shot clocks and/or a WA-1 connected to a scoreboard.
- Physically connect the horn to a scoreboard or shot clock, and it can function as a receiver of wireless data for that display.



### Setting the Switches for Specific Applications

The configuration switches are accessible from the right side of the horn, and are labeled CONFIG. When you look at them with the horn right side up, the switches can be set Left or Right. When you look at them so the switch numbers are right side up, the horn will be on its back and the switches can be set Up or Down. With the power off, set switches 1 and 2 according to what you want the wireless adapter inside the horn to do:

Physically Connected to	Via	Wireless Function	Switch 1	Switch 2
CTS timer or Pace Clock Controller	RS232	Transmits data to a wireless shot clock, or wireless adapter attached to a scoreboard	Right/Down	Right/Down
LED Scoreboard, Pace Clock or Shot Clock	RS485	Receives data from a wireless adapter attached to the timer and passes it to the device it's physically attached to	Left/Up	Left/Up
DisplayLink computer	RS232	Receives data from a wireless adapter attached to the timer and passes it to the DisplayLink computer it is physically attached to	Left/Up	Right/Down
LED numeric scoreboard without RS485 jacks	RS232	Receives data from a wireless adapter attached to the timer and passes it to the scoreboard it's physically attached to	Left/Up	Right/Down

## Setting the Channel

The wireless water polo horn must be set to the same channel as the wireless device it is sending data to or receiving data from.

### **Using Multiple Wireless Water Polo Horns on Different Channels**

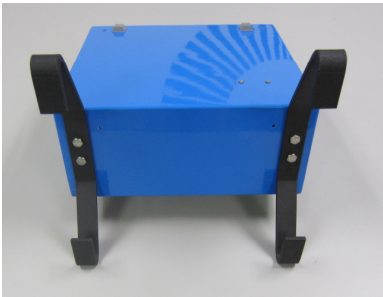
If you are sending different data from two or more timers to separate horns/scoreboards (for example, a water polo tournament with multiple games going on at once), choose channels that are as far apart as possible, and at least two apart.

With the power off, select the channel on the horn by setting switches 3, 4 and 5. Use the same settings for a wireless adapter connected to your System 6:

Channel	Switch 3	Switch 4	Switch 5
1	Right/Down	Right/Down	Right/Down
2	Left/Up	Right/Down	Right/Down
3	Right/Down	Left/Up	Right/Down
4	Left/Up	Left/Up	Right/Down
5	Right/Down	Right/Down	Left/Up
6	Left/Up	Right/Down	Left/Up
7	Right/Down	Left/Up	Left/Up
8	Left/Up	Left/Up	Left/Up

To select the channel on another product, such as a wireless shot clock/pace clock, see the manual for that product.

## Attach Legs or Mount on Wall

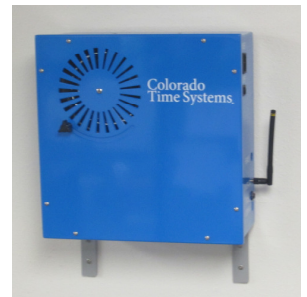


### **Legs**

If desired, attach the legs to the mounting holes in the bottom of the enclosure, using the bolts and split ring washers provided. The washer goes between the bolt head and the leg. (See picture at left)

### **Wall mount brackets**

To mount your horn on the wall, attach the brackets to the bottom of the enclosure using the bolts provided, as shown (top right). The washer goes between the bolt head and the bracket. Choose the location for the horn. It is your responsibility to choose a wall of suitable material capable of securely supporting the horn, which weighs 8 pounds (3.6 kg). Mark the hole locations on the wall, using the remaining holes in the brackets as a guide. Mount with wall anchors.



## Handle

You can remove the handle if you'd like. Simply unscrew the screws using a Philips screwdriver, remove the handle, and replace the screws to keep water from getting inside the unit.

## Antenna

If the antenna is not already attached, screw it into the wireless water polo horn. You have received a spare antenna; keep it in a safe place in case you need it.

# Plugging in

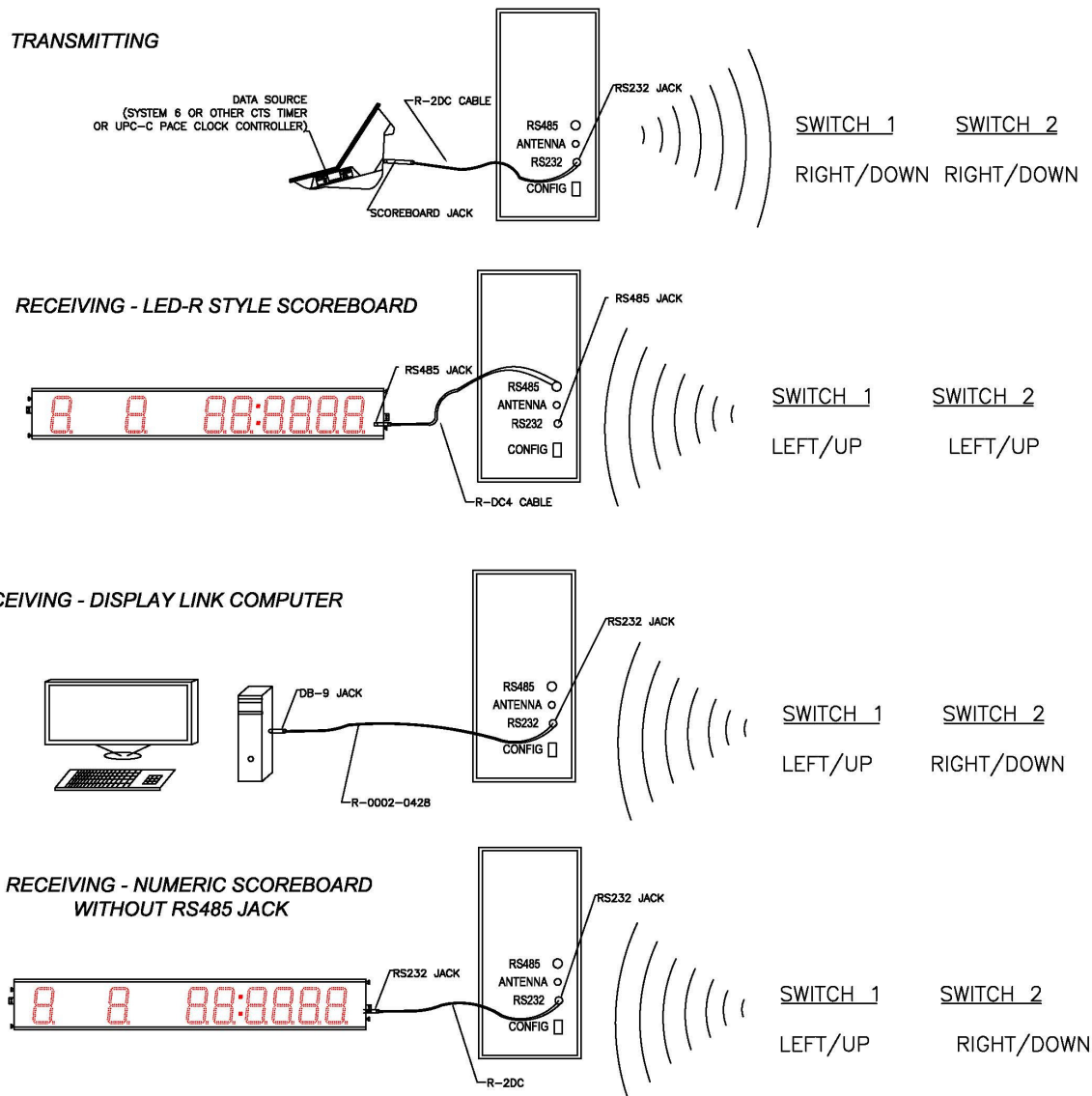
Using the power cord provided, plug the horn into AC power, and turn it on.

## Use as scoreboard adapter

To send data from the System 6 or other CTS timer, use the R-2DC cable

To receive data for:

- LED Scoreboard, Pace Clock or Shot Clock, use R-DC4 cable
- LED Numeric Scoreboard without RS485 jacks, use R-2DC cable (one line of scoreboard only; multi-line not supported)
- Video board or matrix display, connect the DisplayLink computer to the wireless adapter using R-0002-0428 cable. This cable must be ordered separately.



## Adjusting the volume

Loosen the knob on the front of the enclosure and slide the speaker cover closed to slightly muffle the sound, and open to increase the sound. Tighten the knob so it stays in the location you have chosen.

## Battery charging

For portable units, charge the battery by plugging the unit in to AC power overnight with the power switch off. For wall-mounted units, leave the unit plugged in and turned on.

## Horn

The horn will only sound from Module 1, which is the default for both the System 6 and the System 5. Please refer to the Water Polo User manual for your timer for details about modules.

## FCC Compliance Statement for Wireless Water Polo Horn/Scoreboard Adapter

This device complies with Part 15 of the FCC Rules. Operation is subject to the following two conditions:

1. This device may not cause harmful interference.
2. This device must accept any interference received, including interference that may cause undesired operation.

This equipment has been tested and found to comply with the limits for a Class A digital device, pursuant to Part 15 of the FCC Rules. These limits are designed to provide reasonable protection against harmful interference when the equipment is operated in a commercial environment. This equipment generates, uses, and can radiate radio frequency energy and, if not installed and used in accordance with the instruction manual, may cause harmful interference to radio communications. Operation of this equipment in a residential area is likely to cause harmful interference in which case the user will be required to correct the interference at his own expense.

Unauthorized modifications or changes made to this device not expressly approved by the party responsible for compliance voids the user's authority to operate the equipment.